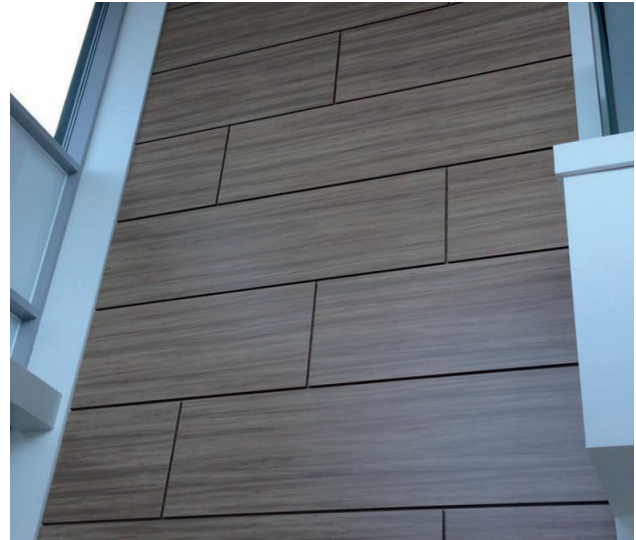
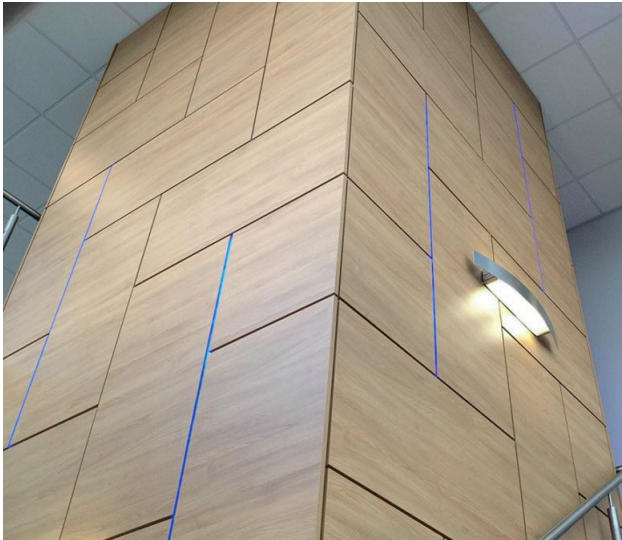


Specification Details

Simplicity Fast Clad Wall System



Face mounted panel sets

Material	19-20mm pre bonded boards
Support frames	19-20mm pre bonded backing board with CNC cutouts (packed out where required)
Fixings	Hook and Peg
Finished look	Front mounted panels onto traditional frames

For colour options please contact our office on **01202 877600**

www.total-laminate.co.uk

Total Laminate Systems

Southern Area (Head Office), 11 Nimrod Way, East Dorset Trade Park, Wimborne, Dorset BH21 7SH, UK

t. +44 (0) 1202 877600 f. +44 (0) 1202 861638 e. sales@total-laminate.co.uk

