



## TLS Enhanced Cubicle 1 (EC1)



### Introduction:

Enhanced Cubicle 1 (EC1) is a cost-effective solution that combines durability and style, making it ideal for projects where both quality and budget are priorities. Manufactured from 19-20mm PANOPREY faced moisture-resistant (MR) chipboard, EC1 offers excellent performance in dry environments. The sleek design is complemented by stainless steel fittings, ensuring a modern appearance while maintaining the strength and reliability needed for dry areas. EC1 is the perfect choice for those seeking a balance of aesthetics and affordability without compromising on quality.

### Applications:

The Enhanced Cubicle 1 (EC1) washroom system is designed to provide a versatile and durable solution for various washroom environments, particularly those that require a high level of hygiene and efficiency. The EC1 system is ideally suited for applications in dry environments, such as office buildings, schools, healthcare facilities, and retail spaces, where maintaining cleanliness and a professional appearance is critical. Its robust design and easy maintenance make it an excellent choice for all dry area applications.

---

#### TOTAL LAMINATE SYSTEMS LTD.

Unit 11 Nimrod Way, East Dorset Trade  
Park, Wimborne, Dorset, BH21 7SH

Tel: **01202 877600**

email: **[sales@total-laminate.co.uk](mailto:sales@total-laminate.co.uk)**

**[www.total-laminate.co.uk](http://www.total-laminate.co.uk)**



## TLS Enhanced Cubicle 1 (EC1)

### Features:

The EC1 cubicle has many features including the following:

- Durable product suitable for dry environments
- Bolt through fixings & secretly fixed options available
- 2mm PVC lipped edges to all panels.
- DDA Compliant turn lock with emergency release facility
- Pedestal legs adjustable to accommodate uneven floors
- Can be manufactured to suit various height requirements
- Manufactured only in PANOPREY faced MR Chipboard
- Available in 45 colours

### Dimensions:

- Standard Height – 2100mm with 150mm floor clearance
- Up to 2700mm high available with 20mm foot or set in floor channel

### Fixtures & Fittings:

Enhanced Cubicle 1 (EC1) uses durable stainless-steel hardware, which provides long-lasting strength and resilience. Stainless steel is an ideal choice for environments where durability and resistance to corrosion are crucial, such as in high traffic or high moisture areas. The material's strength ensures that the cubicle can withstand daily wear and tear, while its resistance to rust and other forms of corrosion make it easy to maintain and clean. This hardware choice also contributes to a sleek, modern aesthetic, enhancing the overall appearance and functionality of the cubicle.



#### TOTAL LAMINATE SYSTEMS LTD.

Unit 11 Nimrod Way, East Dorset Trade  
Park, Wimborne, Dorset, BH21 7SH

Tel: **01202 877600**

email: [sales@total-laminate.co.uk](mailto:sales@total-laminate.co.uk)

[www.total-laminate.co.uk](http://www.total-laminate.co.uk)



## TLS Enhanced Cubicle 1 (EC1)

### Material:

PANOPREY faced MR chipboard is a composite material made by bonding a decorative melamine layer to a chipboard core. This combination results in a durable, cost-effective, and versatile product.

### Durability:

The PANOPREY layer provides a tough, scratch-resistant, and impact-resistant surface, making it suitable for all dry area applications.

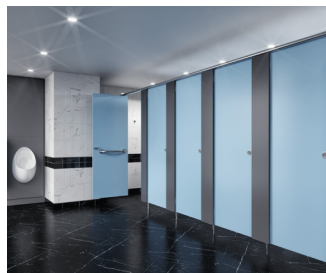
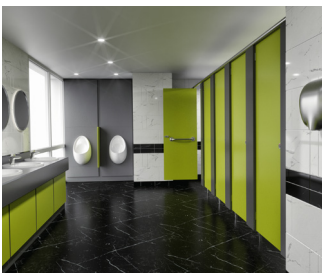
### Moisture Resistance:

The PANOPREY surface offers some resistance to moisture, though it's important to note that while the surface is moisture-resistant, the chipboard core can be vulnerable to water damage if the edges or seams are not properly sealed.

### Cost-Effective:

Compared to solid wood or high-pressure laminates, PANOPREY faced chipboard is a more affordable option, making it a popular choice in budget-conscious projects.

**In summary, PANOPREY faced chipboard is a practical material that offers a combination of durability, design flexibility, and cost-efficiency, making it suitable for a wide range of applications in commercial settings.**



#### TOTAL LAMINATE SYSTEMS LTD.

Unit 11 Nimrod Way, East Dorset Trade Park, Wimborne, Dorset, BH21 7SH

Tel: **01202 877600**

email: [sales@total-laminate.co.uk](mailto:sales@total-laminate.co.uk)

[www.total-laminate.co.uk](http://www.total-laminate.co.uk)