



TLS Shock 13 Cubicle (S13)



Introduction:

Introducing our Shock 13 washroom system, expertly crafted from 13mm Solid Grade Laminate (SGL) to deliver exceptional durability and versatility. This system is designed to perform seamlessly in both wet and dry environments, making it an ideal choice for a wide range of commercial applications. Backed by a 10-year laminate warranty, the Shock 13 washroom system offers reliable performance and peace of mind for years to come.

Applications:

Due to the robust nature of the materials and high-quality fittings this ensures that Shock 13 can withstand the demands of high-traffic areas, making it perfect for schools, gyms, leisure centre's, cinemas, sports stadiums, healthcare facilities, and more. Backed by a 10-year laminate warranty, the Shock 13 washroom system offers reliable performance and peace of mind for years to come.

TOTAL LAMINATE SYSTEMS LTD.

Unit 11 Nimrod Way, East Dorset Trade
Park, Wimborne, Dorset, BH21 7SH

Tel: **01202 877600**

email: **sales@total-laminate.co.uk**

www.total-laminate.co.uk



TLS Shock 13 Cubicle (S13)

Features:

The Shock 13 cubicle has many features including the following:

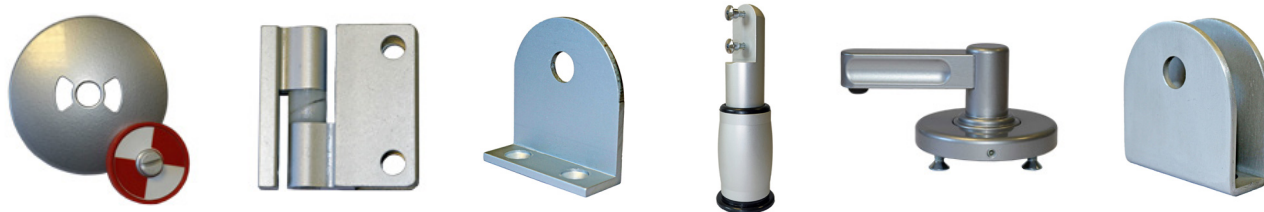
- Versatile product suitable for wet and dry environments
- Bolt through or secretly fixed fittings
- Machined and polished edges to all panels
- DDA Compliant turn lock with emergency release facility
- Pedestal legs adjustable to accommodate uneven floors
- Can be manufactured to suit various height requirements
- Shower cubicle can be supplied with a door or curtain
- Manufactured only in Solid Grade Laminate
- Available in over 100+ laminate colours
- 10 Year Warranty (Laminate Panels).

Dimensions:

- Standard Height – 2100mm with 150mm floor clearance
- Full height cubicles possible with 20mm foot or set in floor channel

Fixtures & Fittings:

Shock 13 uses durable wet area EPC powder coated fittings in a stylish black finish this provides long-lasting strength and resilience. EPC powder coating is an ideal choice for environments where durability and resistance to corrosion are crucial, such as in high-traffic or high-moisture areas. The material's strength ensures that the cubicle can withstand daily wear and tear, while its resistance to rust and other forms of corrosion make it easy to maintain and clean. This hardware choice also contributes to a sleek, modern aesthetic, enhancing the overall appearance and functionality of the cubicle.



TOTAL LAMINATE SYSTEMS LTD.

Unit 11 Nimrod Way, East Dorset Trade
Park, Wimborne, Dorset, BH21 7SH

Tel: **01202 877600**

email: **sales@total-laminate.co.uk**

www.total-laminate.co.uk



TLS Shock 13 Cubicle (S13)

Material:

Solid Grade Laminate (SGL) is a high-performance material widely used in environments requiring durability, hygiene, and resistance to moisture and impact. It's made by compressing multiple layers of kraft paper impregnated with phenolic resin and topped with a decorative surface layer, which is treated with melamine resin for additional strength and protection.

Durability:

SGL is highly durable, capable of withstanding significant impact, abrasion, and heavy use, making it ideal for high-traffic areas like schools, hospitals, and leisure centre's.

Moisture Resistance:

The phenolic resin core and melamine surface layer give SGL excellent resistance to moisture, making it suitable for wet environments such as bathrooms, shower cubicles, and laboratory worktops.

Hygiene:

The non-porous surface of SGL prevents the growth of bacteria and fungi, making it a preferred material in areas where hygiene is crucial.

In summary, Solid Grade Laminate is a durable, moisture-resistant, and versatile material, ideal for demanding environments that require both strength and aesthetic flexibility. Its solid construction and high resistance to wear and chemicals make it a preferred choice for many commercial and institutional applications.



TOTAL LAMINATE SYSTEMS LTD.

Unit 11 Nimrod Way, East Dorset Trade
Park, Wimborne, Dorset, BH21 7SH

Tel: **01202 877600**

email: **sales@total-laminate.co.uk**

www.total-laminate.co.uk